





AUL

INT

FIN

AP
AP
AP
AP
AP

TY LI

ETION

Page

2 e

2

2

2

2

2

4

4

5

6

8

9

11

12

13

15

14

Repr

ent

S

Actio

C

B

rise

Controller
to doing
oversee
s and ob
our aud
overnan
ded to sa

the
ast Islip
to Article
Article 3
in resolu
utations
at region

GOVERN

of t

FOOL

St

ool

ars

bod

ntify

cal

ct as

cho

of

rk S

ct c

uent

our

Back

OFFICE

THE NEW YORK

Obj

Scop

Meth

Comm

Distr

Corr

OF LOCAL GOVERNMENTS

(Appendix)

the Board's response

The Board has

in accordance with

(C) of New

regulations of

the plan (C)

This report

is, with a

to the extent

at the end

of the

of the

the Board should

the Clerk's

Division of Audit Report

the Board should

the Clerk's

of AP
ation
Res
draft
Public

onsist
Ber
Sec
to

KNME
VIR
C

HOCC

ABILIT

issues

re
ati
or
to
com
aw
S
tion
a
wri
frecc

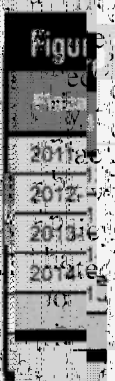
mon

0
y
g
n
d
e



Budgeting

PL
pu
po
T
is
be
fi
a
ba
ba
gr
of



DIVISION

Fun

Balance

M
p
c
p
a
T
E
F
m
b
a
c
c
c
st
at
is
b
B
th
ir
e
ei
F

e Stan

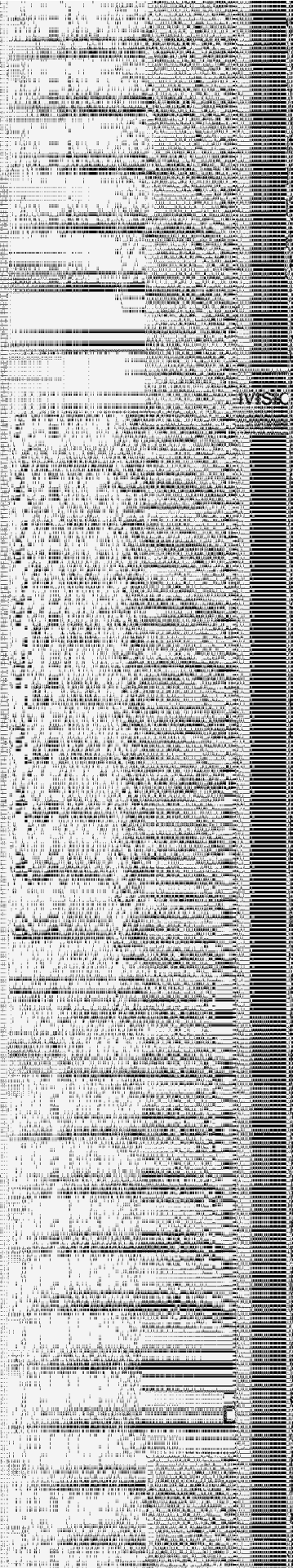
es

COMMUNITY

OFFICE OF

of New York

Reser



avisc

The first section of the report discusses the background and objectives of the study. It highlights the importance of understanding the underlying mechanisms of the phenomenon being investigated. The study aims to explore the relationship between various factors and their impact on the overall system.

The methodology employed for this study is a combination of theoretical analysis and empirical data collection. Theoretical models were developed based on existing literature, which were then tested against experimental results. This approach allows for a comprehensive understanding of the system's behavior under different conditions.

The results of the study indicate that there is a significant correlation between the variables studied. The data shows that as one variable increases, the other also tends to increase, suggesting a positive relationship. However, the exact nature of this relationship and its underlying causes require further investigation.

In conclusion, this study provides valuable insights into the complex interactions within the system. The findings suggest that there are several key factors that influence the outcome, and these need to be carefully managed to achieve the desired results. Further research is recommended to explore these findings in more detail and to develop more effective strategies for optimization.



Recommendation

New

1. Adopt available
2. Update which balance unres
3. Discard exper not n
4. Ensure that each district office
5. Ensure stand taxpa
6. Use result

THE

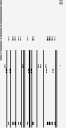
TH

DIVISION

RESP

the District officials' response

s audit
 NT A
 K A
 RIG
 SUMEE
 Jon
 ON S
 ST
 bu
 ND S
 GOV
 U C
 PE
 ACCOUNTAE
 ke S
 Pa be
 UCA
 ea
 OWNERS
 BILITY
 the page.
 A
 V
 R



No

Th
as
des
wa
fr
on
by
in
no
to
be
fin

NC

Al
mc
dis
the

NC

In
as
mi

cont
le app
o crea
t line

g2

stand
s 4 pe
vistic

st

3

st

er by

tion

OS

as
ode

o ory

l as

thro

of

the

ex

ons

at w. L.

in mon

on car

mated

1-12

ation ge

millio

ro

caus

to a

ite the

for

ate

OS

as
ode

o ory

l as

thro

of

the

ex

ons

at w. L.

in mon

on car

mated

1-12

ation ge

millio

ro

caus

to a

ite the

for

ate

OS

as
ode

o ory

l as

thro

of

the

ex

ons

at w. L.

in mon

on car

mated

1-12

ation ge

millio

ro

caus

to a

ite the

for

ate

OS

as
ode

o ory

l as

thro

of

the

ex

ons

at w. L.

in mon

on car

mated

1-12

ation ge

millio

ro

caus

to a

ite the

for

ate

OS

as
ode

o ory

l as

thro

of

the

ex

ons

at w. L.

in mon

on car

mated

1-12

ation ge

millio

ro

caus

to a

ite the

for

ate

OS

as
ode

o ory

l as

thro

of

the

ex

ons

at w. L.

in mon

on car

mated

1-12

ation ge

millio

ro

caus

to a

ite the

for

ate

OS

as
ode

o ory

l as

thro

of

the

ex

ons

at w. L.

in mon

on car

mated

1-12

ation ge

millio

ro

caus

to a

ite the

for

ate

OS

as
ode

o ory

l as

thro

of

the

ex

ons

at w. L.

in mon

on car

mated

1-12

ation ge

millio

ro

caus

to a

ite the

for

ate

OS

as
ode

o ory

l as

thro

of

the

ex

ons

at w. L.

in mon

on car

mated

1-12

ation ge

millio

ro

caus

to a

ite the

for

ate

CHOC

ppria
redu
fare

NS

FS

Sre

Dis

Sec

Turn

mate

war

Age

ex

de

on

de

spe

RES

Me

re

pos

iel's

\$16.

l bak

d exp

used

For

acce

rmng

not

L Acc

RES

ME

S

AN

er by

tion

NTAB

The
thru
201
and



We
plan
for
prov

T

Div

HOW TO OBTAIN

in copies of this report

Obtain
1
A
(S
ht

SCS
of ACCOUNTABILITY

SCS
OF THE REPORT

RNWE

obtai

